

Supplemental Figure S1

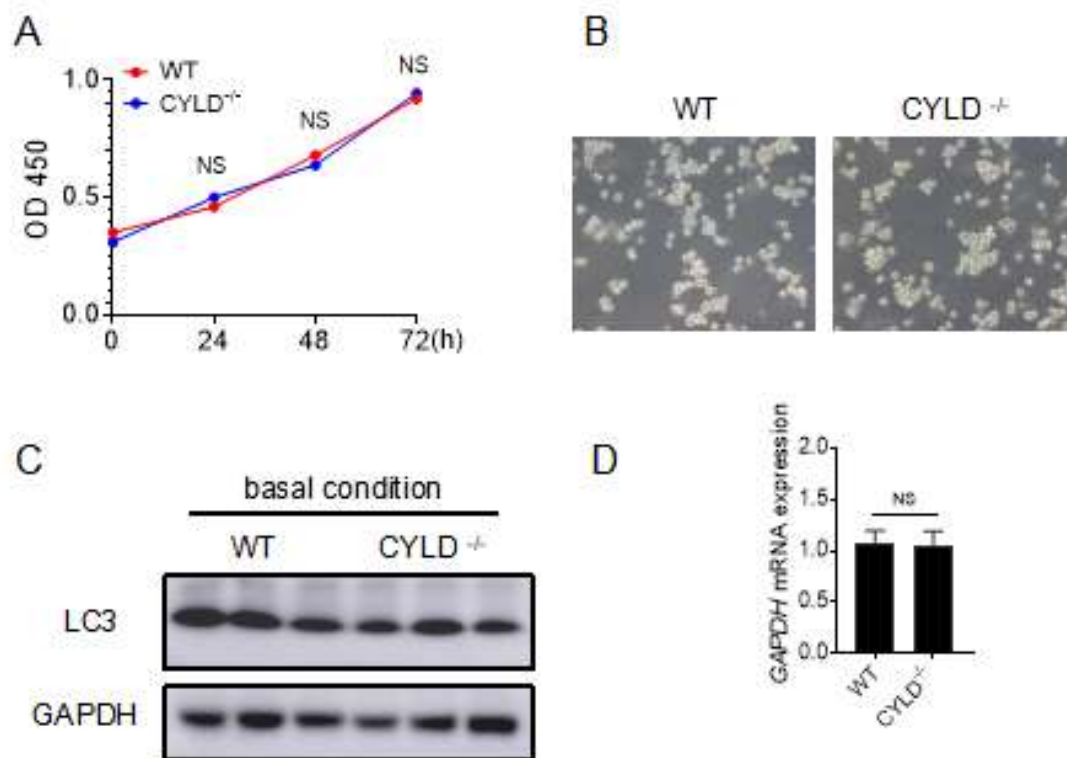


Figure S1. Two groups of cells in basic conditions. (A) CCK-8 assay to determine the proliferation of Jurkat cells and CYLD knock Jurkat T cells. (B) The image of Jurkat cells and CYLD knock Jurkat T cells (20x). (C) The protein level of LC3 were evaluated by immunoblotting analysis in basal conditions. (D) The mRNA expression level of GAPDH by RT-PCR. The data shown represent three independent experiments with similar results.

Supplemental Figure S2

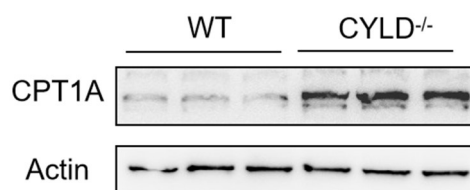
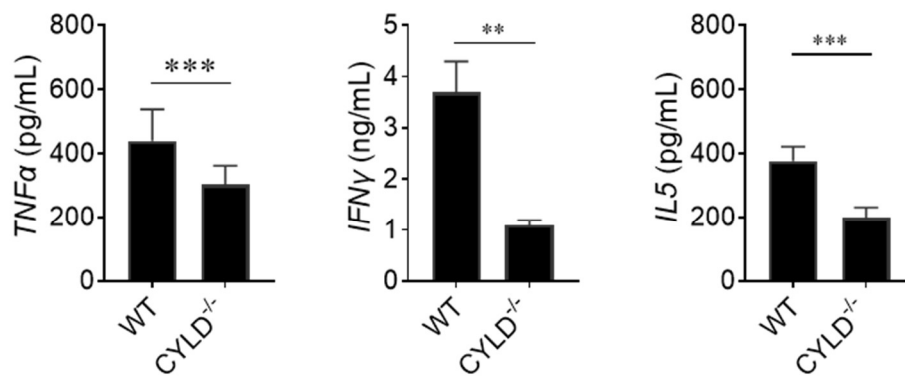


Figure S2. The protein level of CPT1A.

The protein level of CPT1A were evaluated by immunoblotting analysis.

Supplemental Figure S3

A



B

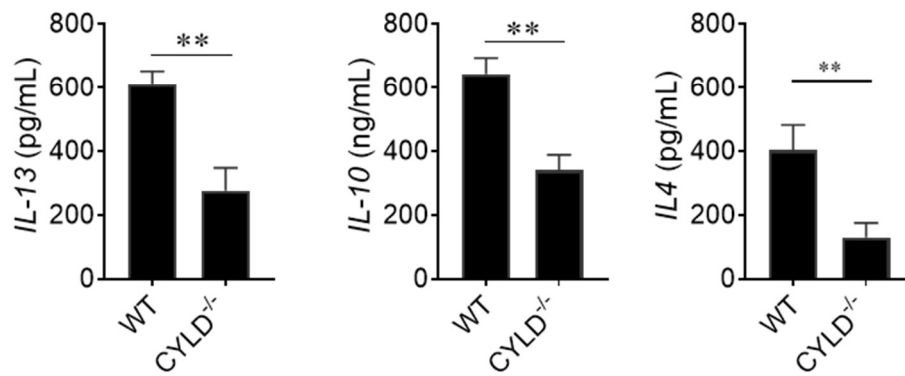


Figure S3. CYLD deficiency decreased inflammatory factors. (A,B) The level of inflammatory factors in the supernatant was measured by ELISA analysis. The data shown represent three independent experiments with similar results.